

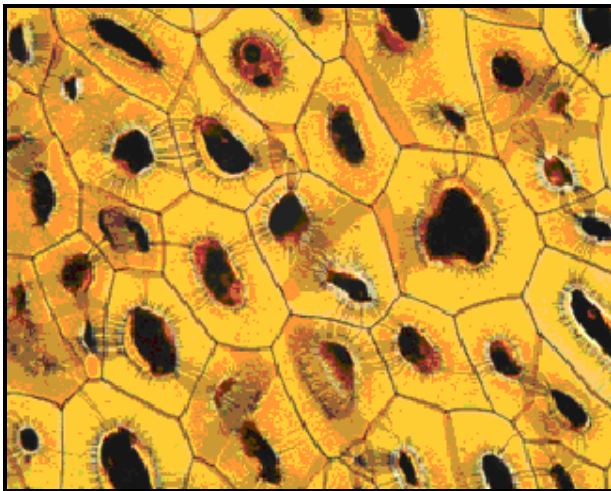


## 1.3 Megapixel CMOS USB 2.0 Camera

High Resolution CMOS Color or Monochrome Microscopy Camera for Qualitative Image Archiving

## Outline

Lumenera's INFINITY1-1 digital camera is designed to be a cost-effective, versatile solution for clinical, life science, materials science and educational professionals. With 1280x1024 resolution and on-board processing, the INFINITY1-1 delivers outstanding image quality for a wide variety of scientific applications.



Live video preview provides for real-time focus, while auto exposure and auto white balance efficiently capture your optimal image. An intuitive user application provides camera controls, while full integration to popular third-party imaging applications is available through our TWAIN drivers.

The USB 2.0 digital interface ensures a simple plug and play installation – and one standard cable minimizes camera clutter. No frame grabber required.

INFINITY1-1 is supported by an experienced team of technical support and imaging experts. We understand your imaging needs and are here to help you get the most out of your camera.

## Performance Features

- ❑ **The high-speed USB 2.0 interface eliminates a framegrabber and facilitates ease of installation on both laptop and desktop computers**
- ❑ **The low noise characteristic of the INFINITY1-1 progressive scan 1.3 megapixel image sensor results in crisp color quality for the most demanding brightfield and darkfield microscopy applications including clinical pathology and cytology, life science and geology**
- ❑ **Full color sub-windowing allows for rapid, focus and scanning of samples: 15 fps at full 1280x1024 resolution and 60 fps at 640x480 resolution**
- ❑ **Select 8 & 10-bit pixel data modes**
- ❑ **The RGB data captured through each pixel contains 30-bits of color image information resulting in 1024 intensity values**
- ❑ **Camera control through an intuitive user TWAIN interface results in rapid image capture archiving and documentation for high throughput applications, demanding research environments and teaching facilities**
- ❑ **The INFINITY1-1 has a compact design equipped with a C-Mount, facilitating installation on all microscope configurations including upright, inverted and stereo**
- ❑ **INFINITY1-1 cameras are software compatible with Windows™ 98 SE, Windows ME, Windows 2K and Windows XP operating systems**

# Specifications

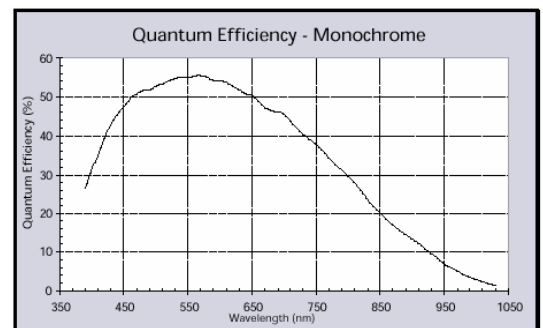
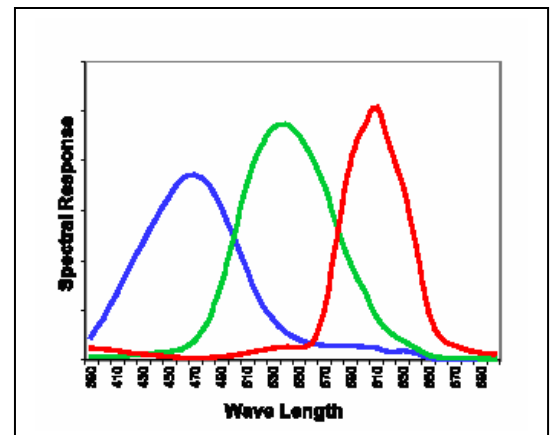
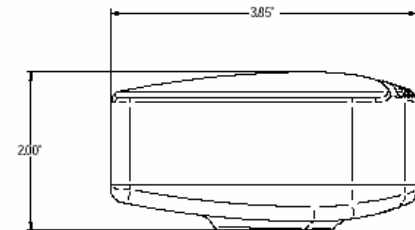
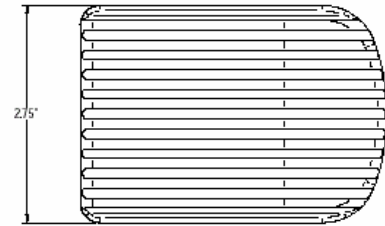
# INFINITY1-1

## Camera Sensor

Image Sensor	<b>1/2" CMOS format, color or monochrome, 6.5mmx5.3mm array</b>
Effective Pixels	<b>1280x1024, 5.2um square pixels</b>
Frame Rate	<b>15 fps at 1280x1024, 60 fps at 640x480</b>
Dynamic Range	<b>&gt;60dB</b>
Digital Output	<b>8 and 10-bit uncompressed</b>
Read Noise	<b>20 e- rms</b>

## Camera Controls

Mass	<b>300g</b>
Power Requirement	<b>USB bus power, or external 5VDC - 500mA</b>
Power Consumption	<b>~2.5Watts</b>
Operating Temperature	<b>0° C to +50° C</b>
Operating Humidity	<b>5%-95%, Non-condensing</b>
Integration Time	<b>1/1000 to 3 sec.</b>
Shutter	<b>Rolling shutter with single frame capture</b>
ROI	<b>User Selectable</b>
Auto Exposure	<b>Automatic / Manual</b>
White Balance	<b>Automatic / Manual</b>
Gain	<b>Programmable / 1 to 10X optimizable</b>
Interface Connector	<b>USB 2.0 high-speed interface</b>
Dimensions (L x W x H)	<b>3.85 x 2.00 x 2.75 inches</b>
Lens Mount	<b>C-Mount lens adapter</b>



## Recommended PC Specs:

- Pentium 4, 1.3GHz or higher
- 512Mb RAM
- 60 GB hard drive free space or more
- USB 2.0 Port
- Windows 2000 or XP

## Minimum PC Specs:

- 600MHz Processor
- 256Mbytes of SDRAM
- 20GB hard drive free space
- USB 2.0 Port
- Windows 98 or ME

## Product Includes:

- INFINITY1-1 digital camera for USB 2.0
- CD-ROM with INFINITY user application software
- TWAIN driver
- Documentation
- USB 2.0 cable

## Ordering Information

INFINITY 1-1C – Color Camera

INFINITY 1-1M – Monochrome Camera

**Full customization available to meet your exact needs!**

**WWW.OEM-OPTICAL.COM / WWW.OEM-OPTICAL.NET**